



Grosvenor Avenue
Islington, N5

Maskells

A beautifully presented and recently renovated one-bedroom apartment, ideally positioned on one of Canonbury's most sought-after residential roads. This impressive home boasts a generous reception room with an elegant feature fireplace, seamlessly flowing into a stylish semi-open plan kitchen fitted with integrated appliances and a gas hob.



French doors from the reception room open onto a private terrace, creating the perfect setting for alfresco dining and entertaining during the warmer months. The spacious double bedroom offers excellent built-in storage and comfortably accommodates a king-size bed, making it equally well suited to a professional couple or single occupant.

Completing the property is a sleek, contemporary bathroom featuring a bath with a luxurious rainfall shower and separate handheld shower.

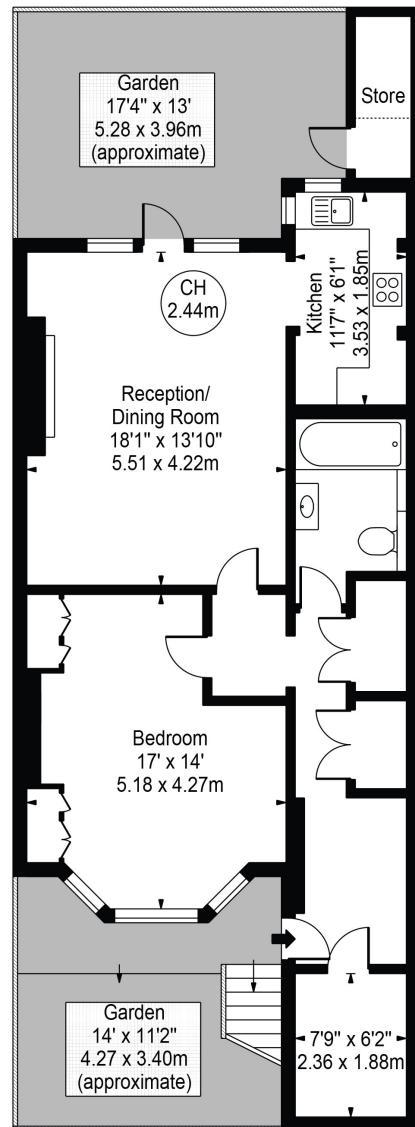
Grosvenor Avenue is a beautifully tree-lined, peaceful road that runs from Highbury Grove in the west to Wallace Road and Canonbury Station in the east, which is 180 yards from the property.

All potential tenants should be advised that administration fees may be applicable when renting a property. Please contact us for more details of these charges. Maskells are members of Propertymark the leading membership body for property agents. We are part of the Propertymark Client Money Protection scheme and a member of The Property Ombudsman Scheme (approved by the Office of Fair Trading) and subscribe to its Codes of Practice for Letting Agent

Accommodation and Amenities

- A superb one bedroom apartment with private garden
- Fully furnished
- Large reception room for entertaining
- 180 yards to Canonbury Station
- 0.6 miles to Highbury and Islington station





APPROXIMATE FLOOR AREA

796 Sq Ft / 73.95 Sq M
(Excluding Store)



TERMS

Asking Price £625 Per Week (£2,709 PCM)

FURNISHED

EPC D

Council Tax Band D

Local Authority Islington



@maskellsea

Maskells

71 Walton Street, London SW3 2HT

Tel: 0207 581 2216

sales@maskells.com

lettings@maskells.com

maskells.com

Lower Ground Floor

